

Littorina saxatilis

Rough Periwinkle

Native to Maine

Coastal
Rocky Intertidal, Docks, and Beaches

Shell Spire (Spiraled End)



Field Studies Council, www.theseashore.org.uk



Look for a shell with a short spire (spiraled end) that ends in a pointed apex (tip). Spiral ridges circle the spire and the body, making it 'rough'. Use the diagram to help you.

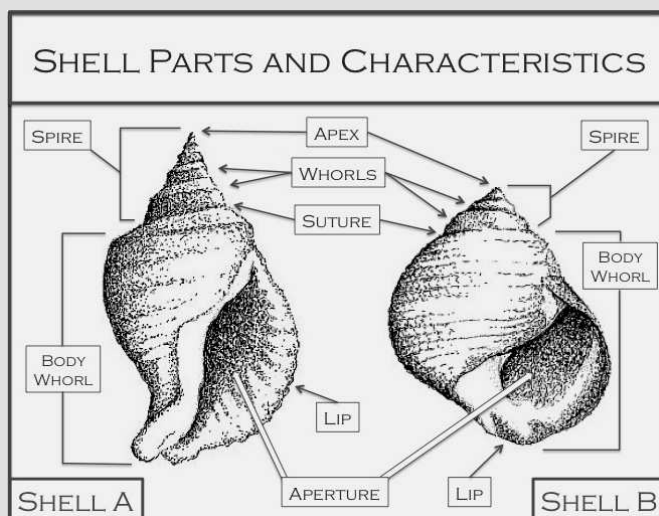
Full View



Field Studies Council, www.theseashore.org.uk



Look in the dry upper intertidal for a periwinkle with spiral ridges circling the whole shell. The spire (spiraled end) is short, like Shell B in the diagram.



Shell Aperture (Opening)

Your Photo here!

We need a picture of the Shell Aperture (Opening) of the Rough Periwinkle for this identification card. Please take a clear photo of the round, dark opening, and send it to vitalsigns@gmri.org

Look for the aperture (opening) to be round.

Color Variations



M J Richardson, www.geograph.org.uk



The most common color of the Rough Periwinkle is yellow. Often the lower whorls will be yellow and the upper ones on the spire will be gray.

www.vitalsignsme.org

Similar Species

The Rough Periwinkle looks a lot like the Common Periwinkle with some exceptions. The Rough Periwinkle has deep spiral ridges and the inside of the shell is darker than the outside. The Common Periwinkle has less obvious ridges and the inside of the shell is lighter than the outside.

Fun Fact

The Rough Periwinkle keeps its eggs inside its shell until they have hatched. Once the young finally emerge they have a full shell and are better protected against predators. The Rough Periwinkles also breathes air using its shell like a lung so it can stay in the dry upper intertidal zone.