

Littorina saxatilis

Rough Periwinkle

Native to Maine

Coastal
Rocky Intertidal, Docks, and Beaches

Shell Aperture (Opening)



WoRMS for SMEBD



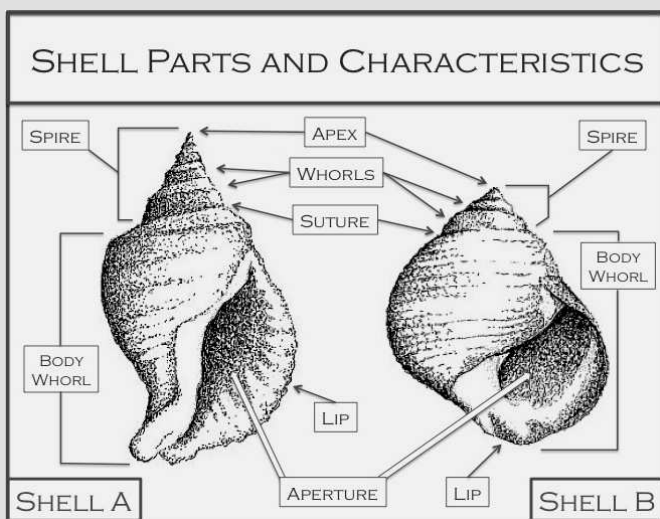
Look for the aperture (opening) to be round. The outer lip meets the body whorl at an obtuse angle (greater than 90 degrees).

Full View



WoRMS for SMEBD (CC-BY, NC, SA)

Look in the dry upper intertidal for a periwinkle with spiral, indented ridges circling the whole shell. The spire (spiraled end) is short, like Shell B in the diagram.



Shell Spire (Spiraled End)



VS user GMRIAdventureClub



Look for a shell with a short spire (spiraled end) that ends in a pointed apex (tip). Indented ridges circle the spire and the body, making it "rough." Use Shell B to help you.

Color Variations



M J Richardson, www.geograph.org.uk



The rough periwinkle is most often yellowish, with grayish whorls on the spire. On the periwinkle's head, look for black lines that run the length of the tentacles (vertebrate lines).

Similar Species

Rough and common periwinkles look alike! Rough periwinkles have deep, indented whorls. The rough periwinkle's head tentacles have verticle lines, and the common's tentacles have horizontal lines. The rough's lip meets the whorl at a > 90 degree angle (common = < 90 degree angle).

Did You Know?

The rough periwinkle keeps its eggs inside its shell until they have hatched. Once the young finally emerge they have a full shell and are better protected against predators. The rough periwinkle also breathes air using its shell like a lung so it can stay in the dry upper intertidal zone.

