

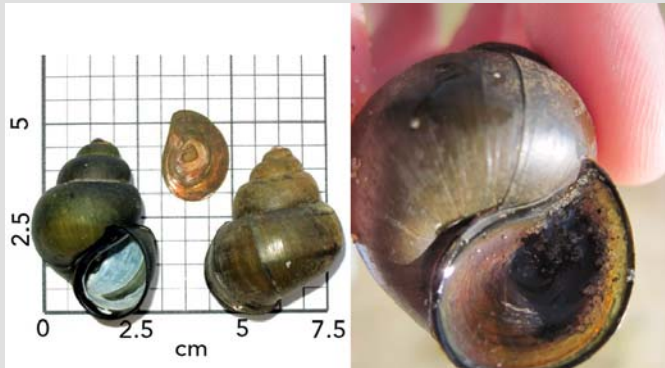
Cipangopaludina chinensis

Chinese Mystery Snail

Invasive to Maine

Freshwater
Ponds, Lakes, and Slow Rivers

Shell Aperture (Opening)



Laura Herman UWPS, VS user Tree Huggers

PERMITTED USE

Look for the operculum - a trap door that allows the snail to close the opening in their shell. The operculum is a rounded half moon shape. The shell is wider than it is long (height:width < 0.85)

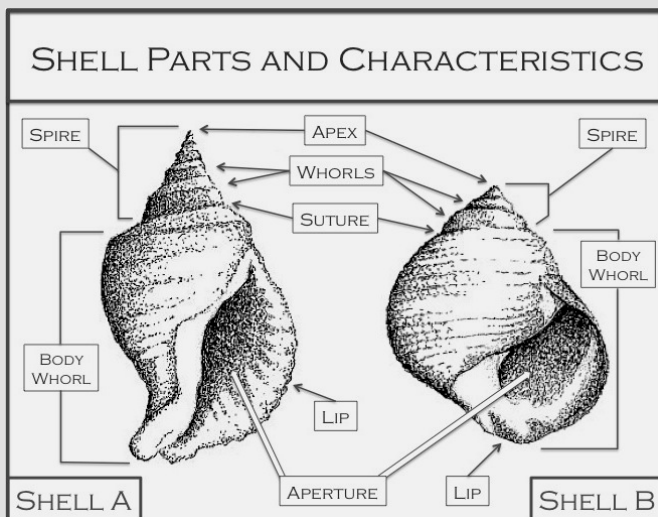
Full View



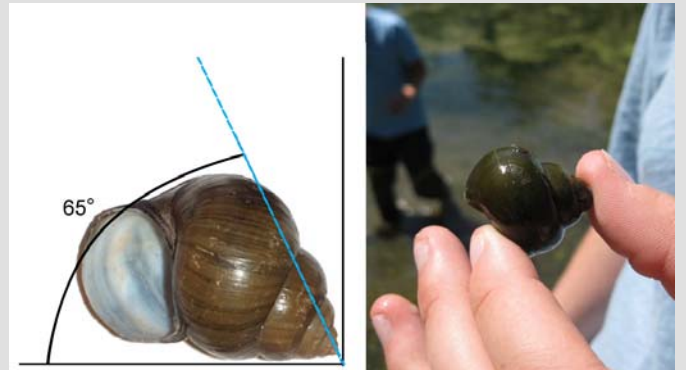
Oregon Dept. of Fish & Wildlife, VS IndNewtonGreen

CC BY SA

Look for a large (up to 7 cm) olive green snail with a wide shell. The outer lip is rounded and black and it may have a worn spire.



Shell Spire (Spiraled End)



The Malacologist's Corner, VS user Datatrooper

PERMITTED USE

Look for a snail with a shell that is smooth and strong. The shell has strongly convex (bulging) and very indented whorls. The snail has a spire that is usually 60-70 degrees.

Color Variations



VS users Scud6, Kchambers, Oxford Hills MS

CC BY

The Chinese mystery snail is light to dark olive-green with a dark edge on the opening. The inside of fresh snail shells is light blue-white.

Similar Species

The brown mystery snail is very similar to the Chinese mystery snail. The Chinese mystery snail is less pointy and has a rounder operculum than the brown mystery snail which has a tear-drop shaped operculum and a pointy spire. The banded mystery snail has strong horizontal bands and is tan colored.

Did You Know?

The female mystery snail gives birth to live crawling young. This means it may only take one impregnated snail to start a new population. These snails are a delicacy in Asian cuisine.

NEVER release live snails from aquariums!

Researched and created by: Caroline Casals, Rebecca Martin
Help us improve this species card! Contact us with your updates.