

Diptera

Mosquito

Native to Maine

Freshwater
Waters edge, Rivers, Wetlands

Larval Form

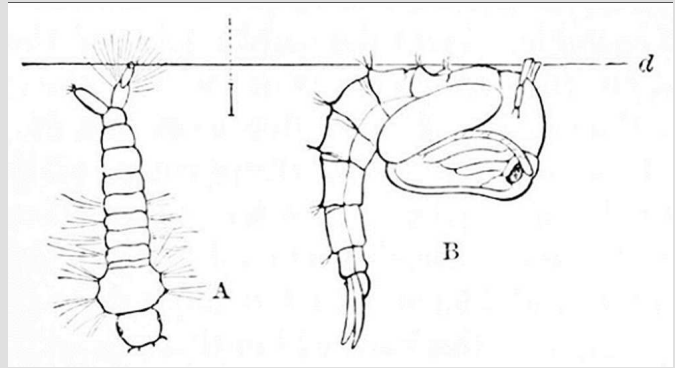


Marc AuMarc



Look for mosquito larva directly below the surface of the water. They are normally upside down with a breathing tube pointed up, touching the surface of the water.

Larva Illustration



Popular Science



Sketch A is of the mosquito larva. Sketch B is of the mosquito pupa. Note the hairs on the mosquito larva and its enlarged "chest" between the head and other body segments.

Variations and Details

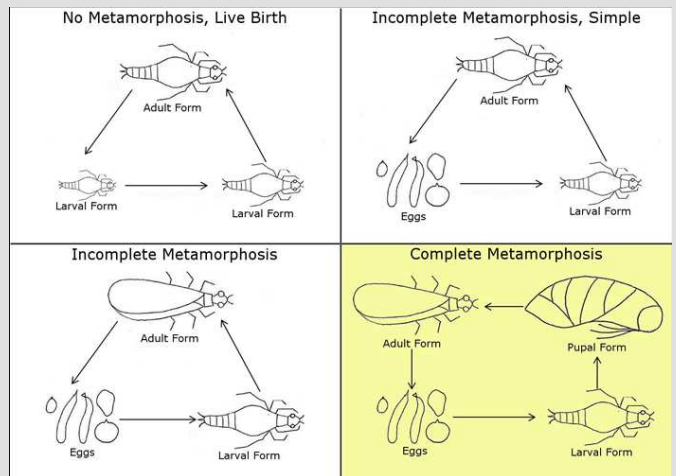


James Gathany of CDC



A mosquito pupa looks like a comma because the head and thorax merge together. The mosquito larva has a well-developed head with two defined, black eyes.

Life Cycle Diagram



Adult Form



Flickr.com user dr_relling



The mosquito adult head has distinctly separate eyes, a pair of long, segmented antennae and a projecting proboscis used for feeding. Adults have six legs and a pair of wings.

Similar Species

Native mosquitoes can be confused for invasive mosquitoes such as the Asian tiger mosquito. Asian tiger mosquitoes will have white bands on their abdomen and thorax. Native mosquitoes will not. Asian tiger mosquitoes have only been found south of New York.

Did You Know?

Mosquitoes are vectors! They are carriers for many harmful diseases such as malaria and West Nile virus.

Tolerant of pollution.



Gulf of Maine
Research Institute



www.vitalsignsme.org

Researched and created by Jeffrey Rubel & Ruthie Hawley
Help us improve this species card! Contact us with your updates.