

# Diptera

## Midge Fly

Native to Maine

Freshwater  
Waters edge, Rivers, Streams

### Larval Form

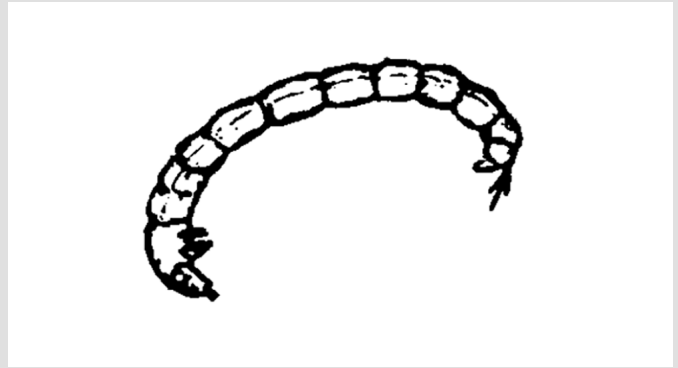


City of Cockburn, Australia



Look for larva that are extremely small and thin. They are worm-like and wiggle intensely when out of water. Midge larva can be 2-30 mm in length.

### Larva Illustration



Kentucky State University



Look for segmented bodies that sometimes curl up. The entire body will be covered in a hard, segmented skeleton.

### Variations and Details

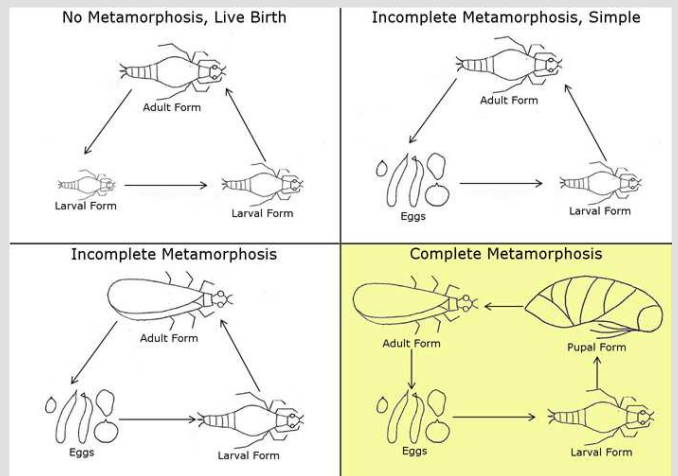


Dave Ingram



Larva color will vary from gold to brown to green to tan to black. Some will be bright red because of hemoglobin.

### Life Cycle Diagram



### Adult Form



Flickr.com user Dendroica cerulea



Look for adults that resemble small mosquitoes, but the midges have fuzzy antennae. They are often found in large swarms. Their wings are long and narrow without scales.

### Similar Species

They resemble mosquitoes as adults, but adult midge flies have fuzzy antennae and lack scales on their wings. Larva can be confused with riffle beetles, but riffle beetles lack the curved and weaker appearance of a midge fly.

### Did You Know?

There are over 20,000 different midge species worldwide! In colder regions, midge larvae may overwinter in the pupa stage within the sediment.

Tolerant of Pollution.



Gulf of Maine  
Research Institute



[www.vitalsignsme.org](http://www.vitalsignsme.org)