

Oligochaetae

Aquatic Worm
Tubifex Worm

Native to Maine

Freshwater
Ponds, Lakes, Rivers, and Streams

Larval Form

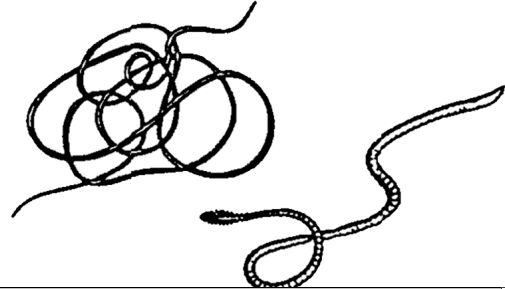


echezabalperiod2.wikispaces.com



Look for creatures that resemble slender earthworms. They are segmented and normally grow up to 7.5 cm

Larva Illustration



Kentucky



Aquatic worms are most often long and slender, and they may wriggle rapidly when moved.

Variations and Details

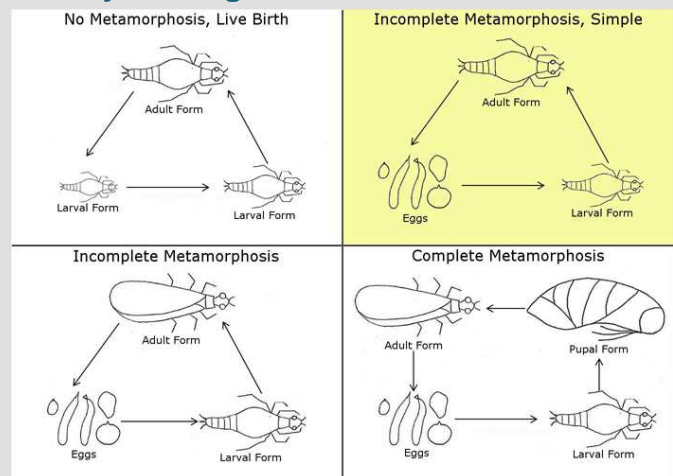


Matthias Tilly

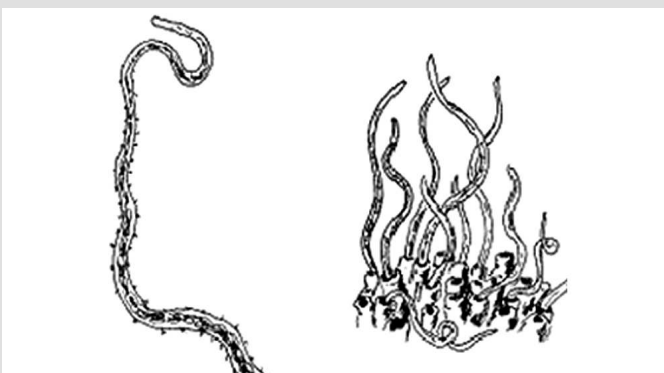


Aquatic worms vary primarily in color. They can be red, brown, gray, or a combination of these colors.

Life Cycle Diagram



Adult Form



Wikimedia Commons user Hydro



Look for worms in clusters. The adults look nearly identical to the younger forms of worms.

Similar Species

While it is not easy to confuse an aquatic worm with other macroinvertebrates, they can be confused with earthworms (but earthworms aren't found in water bodies!).

Did You Know?

Aquatic worms are hermaphroditic, like earthworms, which means that they have both male and female reproductive organs within one worm. Fertilization and development of embryos occurs within a cocoon.

Tolerant of Pollution.



Gulf of Maine
Research Institute



www.vitalsignsme.org