

Plecoptera

Stonefly Larva

Native to Maine

Freshwater
Rivers and Streams

Larval Form

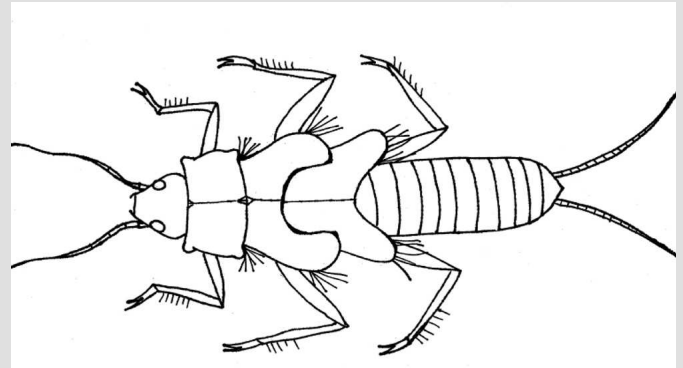


Wiki commons user bohringer friedrich



Look for a small (0.8 to 3.8 cm) aquatic insect with 2 long antennae and 2 long tails. Stonefly larvae have 6 thick legs on the middle section of their bodies and 2 claws on each leg.

Larva Illustration



R. Martin



Look for hair-like gills on or around the base of the legs. Stonefly larvae may do "push-ups" to increase the amount of water (and oxygen) flowing around their gills.

Variations and Details

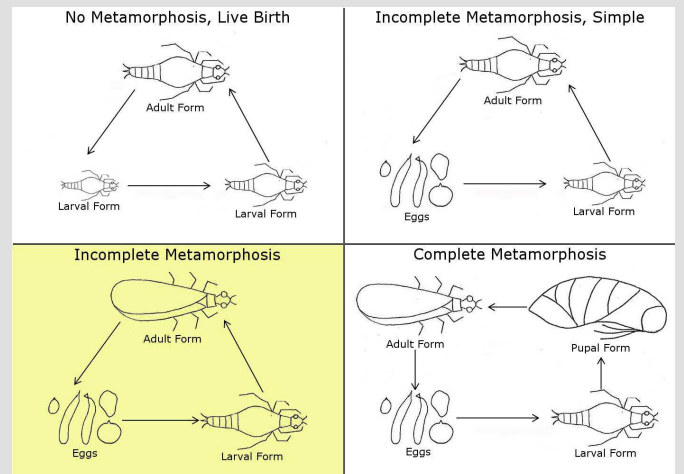


Picasa user Harps, Flickr users smcann, bugeaters



Stonefly larvae can be long and thin or wide and flat. Some species are dark in color and others are light. Most species of stonefly have wings as adults, but a few species do not.

Life Cycle Diagram



Adult Form



Flickr user jclucier



Look for an insect with 2 long, thin antennae and 2 long tails. Stoneflies are generally not strong fliers and stay near the ground. Adults have 2 pairs of veined wings.

Similar Species

Stonefly larvae are similar to mayfly larvae in shape and size. To tell them apart, stoneflies have two claws per leg and no gills on their abdomens. Some stonefly species have gills at the base of their legs. Mayflies have one claw per leg and gills on their abdomens.

Fun Fact

Female stoneflies lay hundreds or thousands of eggs in a ball, which they carry and deposit into water. Most stonefly species' eggs hatch in 2 to 3 weeks. Some species' eggs remain dormant through a dry season and hatch when conditions are right.

Sensitive to Pollution



Gulf of Maine
Research Institute



www.vitalsignsme.org

Researched and created by: Rebecca Martin

Help us improve this species card! Contact us with your updates.