

Zygoptera

Damselfly nymph

Native to Maine

Freshwater

Larval Form

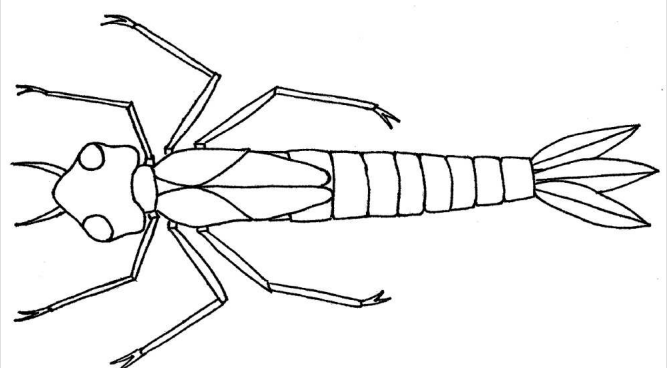


Jason N@troutnut.com

PERMITTED USE

Look for a long (up to 2.5 cm), thin, tube-shaped aquatic insect with 3 fin-like gills at the rear of its abdomen. Damselfly nymphs have 6 legs located close to their heads.

Larva Illustration



R. Martin

CC BY

Damselfly nymphs have a fairly large and often pentagon-shaped head. Damselfly nymphs have extendable jaws which they use to catch their prey.

Variations and Details

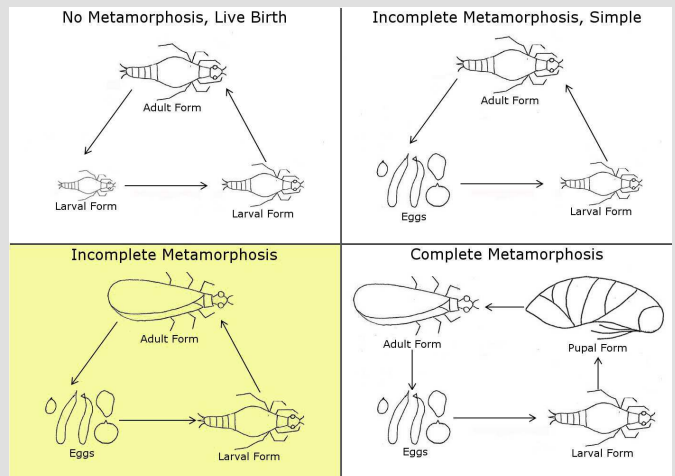


Jason N@troutnut.com, Flickr, Chris 184, Liz D.

PERMITTED USE

Damselfly nymphs are usually olive green to brown in color. Smaller and younger nymphs are lighter in color. Some adult damselflies are brightly colored and others are dull in color.

Life Cycle Diagram



Adult Form



Wiki Commons user Louise Docker

CC BY

Look for a flying insect that holds its wings behind its body when it is resting. The four wings of the damselfly are not as long as its body. Damselflies have a simple fluttering flight.

Similar Species

Damselfly nymphs look similar to dragonfly nymphs. Damselfly nymphs' heads tend to be wider than their bodies and dragonfly nymphs' heads tend to be narrower than their bodies. When resting, adult damselflies hold their wings behind them and dragonflies hold their wings to their sides.

Fun Fact

Damselflies are predators. As nymphs they feed on daphnia, mosquito larvae, and other small aquatic organisms. As adults they eat flies, mosquitoes, and other small insects.

Moderately Tolerant of Pollution



Gulf of Maine
Research Institute



www.vitalsignsme.org

Researched and created by: Rebecca Martin

Help us improve this species card! Contact us with your updates.