

Viviparus georgianus

Banded Mystery Snail

Non-Native to Maine

Freshwater
Ponds, Lakes, and Slow Rivers

Shell Aperture (Opening)



Laura Herman UWPS, Bill Frank

PERMITTED USE

Look for an operculum (trap door) that is rounded on one side. The shell will be a little longer than it is wide (height:width ≤ 1.35)

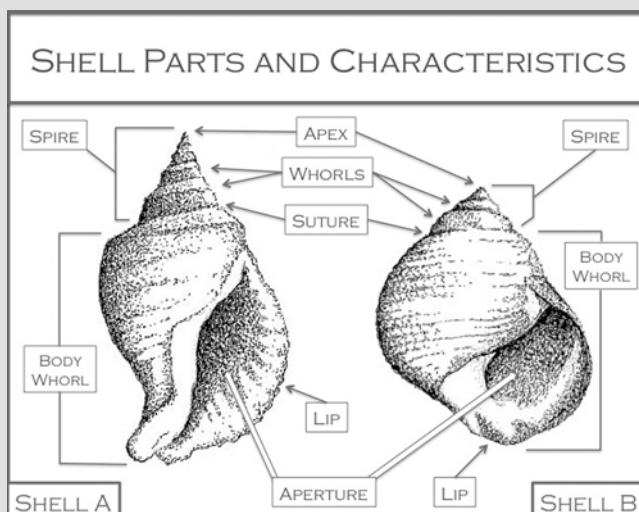
Full View



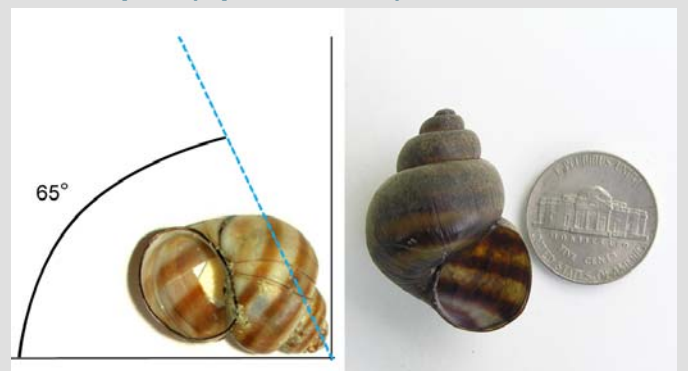
Bill Frank

PERMITTED USE

Look for a medium sized (up to 3.8cm) tan snail with horizontal bands on its shell whorls. The outer lip is sometimes light in color and the spire is blunt.



Shell Spire (Spiraled End)



Laura Herman UWPS, Bill Frank

PERMITTED USE

Look for a snail with a smooth and thick shell. The spire is blunt with an angle of greater than 65 degrees.

Color Variations



Bill Frank

PERMITTED USE

Look for a light colored snail with red-brown horizontal bands. Sometimes bands are only seen from the inside of the shell.

Similar Species

The banded mystery snail is very similar in shape to other mystery snails, but the banded mystery snail has distinct horizontal bands and a light tan color.

Did You Know?

The banded mystery snail is native to the southeastern US and it shares its species name with its home state - Georgia! It has not been found in Maine yet.