

# Anoplophora glabripennis

Invasive to Maine

Asian Longhorned Beetle  
ALB

## Adult Form



Dean Morewood, Health Canada, Forestry Images



Look for a 2.5 to 4 cm long black insect, with white dashes on its antennae. Females' antennae are as long as their bodies and males' antennae can be twice as long as their bodies.

## Habitat



RichSPK, Flickr



Look for frass (sawdust) around tree bases and round 1 cm holes where adults exited the trees. ALB exit holes may ooze sap. ALB host species include maple, poplar, birch, and elm.

## Life Cycle Description

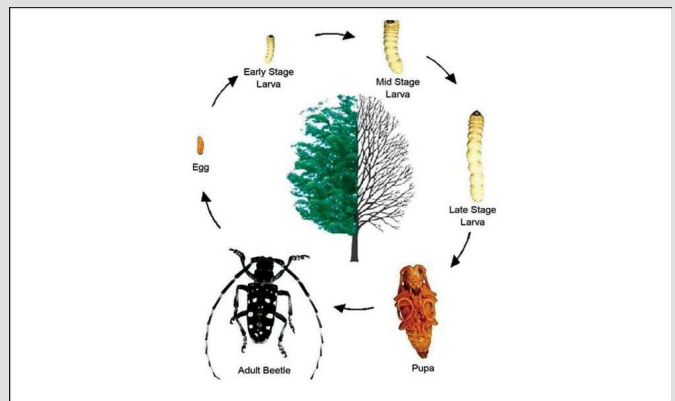


Ken Law, USDA APHIS PPQ; mike.benedetti, flickr



ALB have complete metamorphosis. In spring adults hatch from pupae and burrow out of host trees. In summer ALB females chew pits into bark and lay an egg in each pit.

## Life Cycle Diagram



Mike Bohne, USDA's U.S. Forest Service

## Larval Form



USDA APHIS PPQ, Forestry Images



Larvae are rarely seen because they burrow beneath tree bark after hatching. Larvae are segmented, pale yellow, and have brown mouths. They eat tree tissue and pupate over winter.

## Similar Species

The whitespotted pine sawyer and the ALB are both large, black beetles with white dashes on their wings. To tell them apart, look for a bluish tinge on the legs and antennae of the ALB. The whitespotted pine sawyer also has a distinct white spot on its back.

## Did You Know?

The ALB entered the United States inside solid wood packing material from China. The ALB larvae live deep inside trees for most of the year, so they can easily be moved in firewood, live trees, or fallen timber. To keep this invasive from spreading, do not move infested firewood, trees or fallen timber!

Researched and created by: Rebecca Martin

Help us improve this species card! Contact us with your updates.



Gulf of Maine  
Research Institute



[www.vitalsignsme.org](http://www.vitalsignsme.org)