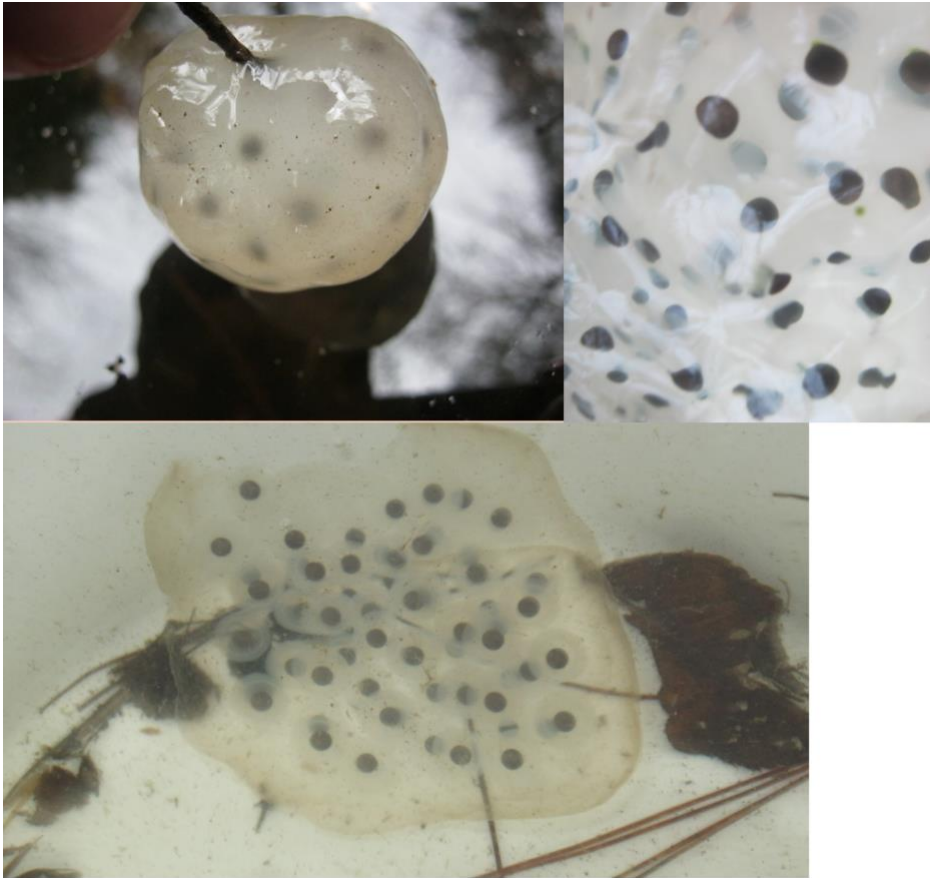


Spotted Salamander

Stage 1:

Egg masses start the size of golf balls and gradually increase in size. Embryos within the egg masses are tight spheres that do not yet resemble spotted salamander larva.



Credit: 4gredteam(top left) 4rpurple (top right) 4sgreen (bottom)

Stage 2:

Egg masses have taken on kidney shape. Head and tail begin to form within the embryos. No other features are distinguishable.



Credit: 4plyellow(top) 34sblue (bottom)

Spotted Salamander

Stage 3:

The shape of the salamander larva is distinct inside the egg masses. Feathery gills and arm buds begin to appear. Yolk around the larvae begins to disappear.



Credit: 4hred (top) 4gred team (bottom)

Stage 4:

Close to all salamander larvae have emerged from egg mass.



Credit: 4ggreenteam

Wood Frog

Stage 1:

From Maine Vernal Pools Mapping Project:

Firm, tight mass where individual eggs are spherical and easily discernable

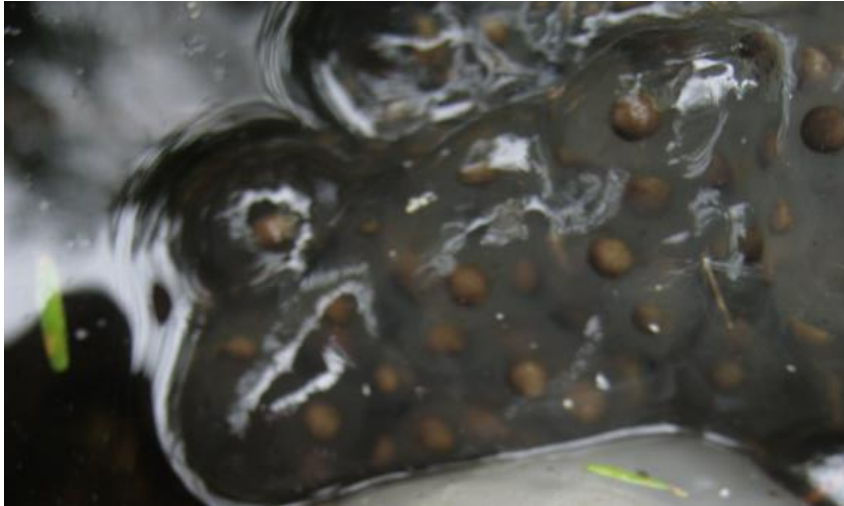
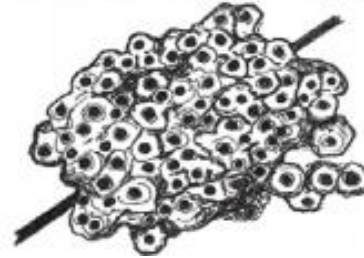


Photo Credit: 4ggreenteam

Stage 2:

From Maine Vernal Pools Mapping Project:

Eggs are swollen with water and mass is beginning to break down



Egg masses grow to the size of a softball or larger. Head and tail shape begin to form within embryos. The surrounding jelly starts to disintegrate.



Credit: 4dlyellow (top) 4hgreen (bottom)

Wood Frog

Stage 3:

From Maine Vernal Pools Mapping Project:

Larvae hatched or hatching and
egg mass is disintegrating

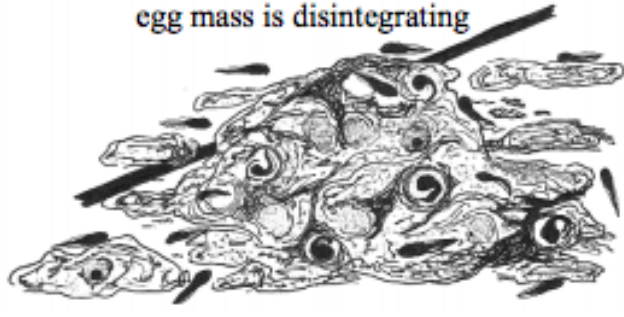


Photo credit: Of Pools and People "Municipal Vernal Pool Data Form"
presentation: http://www.vernalpools.me/wp-content/uploads/2015/06/4_2010DataForm.pdf

Stage 4:

Close to all tadpoles have emerged from egg masses.



Credit: 4kredtteam (top) 4dlgreenteam (bottom)

